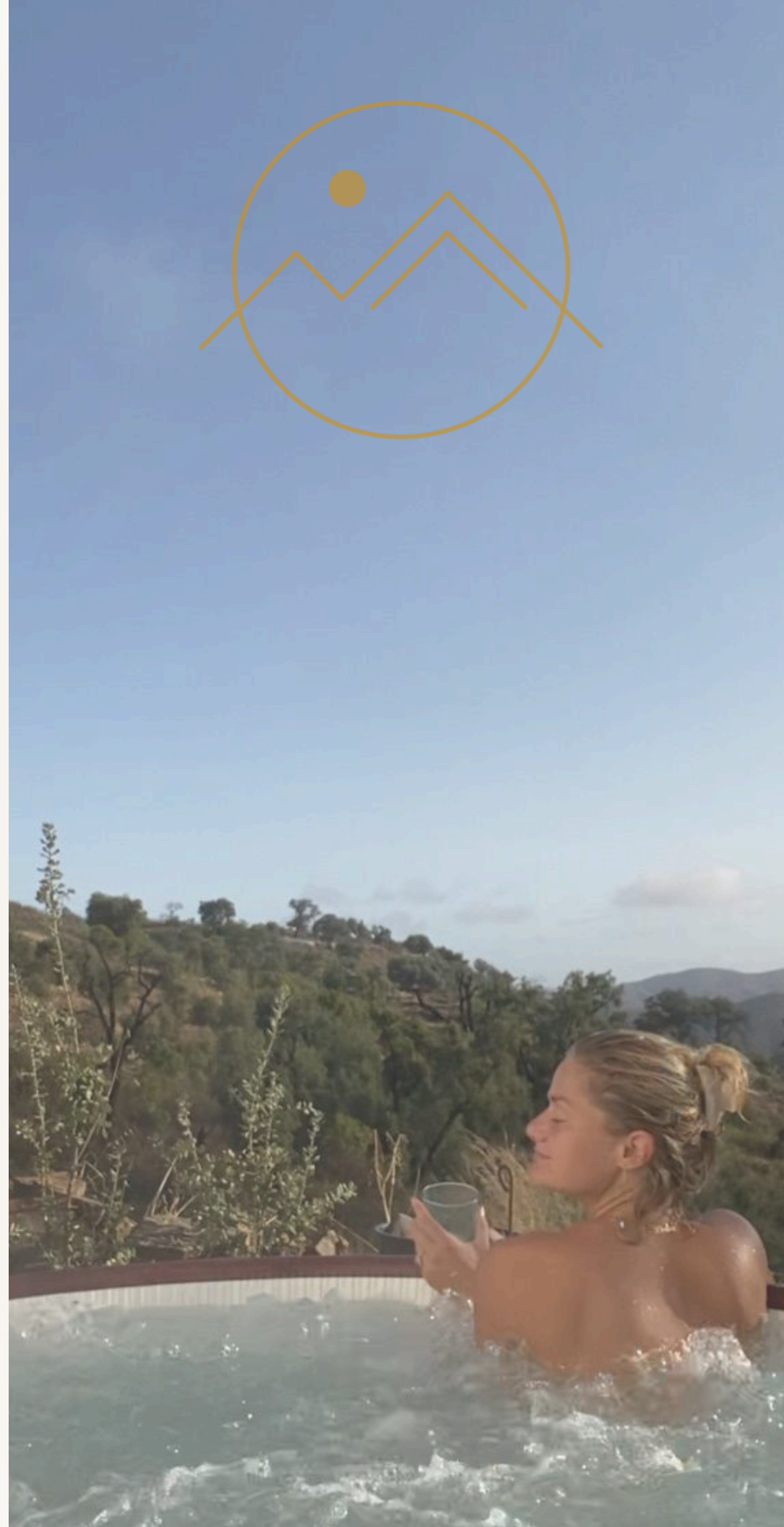




# CASA LI

PRESENTATION & PRICES

2024/2025



## INDEX

- Welcome
- The House
- The Rooms
- The Glamping Tent
- The Yoni Yoga Deck
- Pool & Hiking
- The Ceremony Space
- Extras
- Options & Prices
- Booking Process
- How to Get Here/  
Contacts

# WELCOME

Every structure Lidia has created at Casa Li is crafted deliberately for healing. From the architecture to the atmosphere, we've purposefully built this place to facilitate and enhance your transformative journey, giving you a safe place to open up and blossom.

Discover the beauty surrounding Casa Li as more than just a backdrop. Hike through scenic trails, experience a unique swimming adventure in the nearby river, or savour the breathtaking sunset from our exclusive 360-view yoga deck. At Casa Li, every moment is an invitation to embrace the extraordinary.

Our guests can enjoy:

- a 150m2 house with 5 bedrooms
- a 6-person dorm
- a 4-person glamping tent equipped with a bathroom and kitchen
- a yoga deck
- a ceremony space, terraces
- a hot tub
- a pool and gardens
- a backyard fire pit





# THE HOUSE

The house features four bedrooms and three bathrooms, including a luxurious master bedroom with a 1.60 m double bed, fireplace, work desk, and spacious closets. The other bedrooms feature two single beds which can be converted into double beds.

The kitchen has modern appliances such as an oven, dishwasher, coffee machine, and kettle, with enough crockery and cutlery for up to 20 people.

The living room boasts a long table, a comfortable large L-shaped couch with poofs around it, and a TV with internet access.

Kindly be informed that Casa Li is currently undergoing renovations which are finished in April '24, and it's worth noting that the living room and dining table are twice as spacious as shown in the pictures.





## THE ROOMS

At Casa Li, the rooms were designed with the intention of exuding tranquility and comfort.

There are four two-person bedrooms with two separate, comfortable beds. In the dorm are three single beds and one bunk bed.

The rooms are tastefully decorated with natural tones, inviting relaxation and reflection. The windows frame picturesque views of the lush gardens and the surrounding mountain landscape, allowing ample natural light to bathe the space in a warm, welcoming glow.





The beds promise restful nights, while a small writing desk provides a quiet corner for journaling or meditation.

The two-person bedrooms have separate, single beds and modern en-suite bathrooms. The en-suite bathroom, elegantly designed with contemporary fixtures, features a spacious walk-in shower.

All rooms come with Wi-Fi, towels, comfortable summer or winter duvets and fans to ensure a comfortable stay.





## THE GLAMPING TENT

The glamping tent boasts a wooden deck in the front, providing the perfect spot for a workshop or chill area where you can soak up the natural beauty of the Algarve mountains. Inside, the tent features two cosy bedrooms, one with a double bed and the other with a bunk bed, accommodating up to four guests.

The tent also includes a bathroom with a toilet, hot shower, and sink, ensuring you have everything you need for a comfortable and enjoyable stay.

The kitchen is equipped with a fridge, a single electric stove for cooking, a coffee machine, and a kettle, giving you the convenience of cooking meals and making hot drinks right in your tent.



# THE YONI YOGA DECK

Experience the breathtaking views from our Yoni Yoga Deck at Casa Li! Our stunning deck provides an ideal spot for practising yoga and meditation, surrounded by the natural beauty of the Algarve mountains.

Throughout the year, our Yoni Yoga deck offers a perfect setting for your yoga practice. During the winter, the mountains protect you from the wind, making it an ideal spot to practice even on cooler days. In the summer, the deck is perfect for morning yoga, with the sun rising behind the mountain. In the evening sessions, you can witness the most beautiful sunsets.





## POOL

At Casa Li, we provide the ultimate relaxation experience with our amazing pool. The stunning view makes it the perfect place to relax and soak up the sun.



## HIKING

Explore breathtaking hikes in the mountains surrounding Casa Li, setting the perfect tone for your retreat day. During the enchanting seasons of spring, autumn and winter, venture towards the river for a rejuvenating dip, enhancing your overall experience. We would love to share our favourite hiking tracks with you.







## ‘DE RUIMTE’ CEREMONY SPACE

Our enchanting ceremony and workshop space is an intimate and beautiful room overlooking the hilly landscape around Casa Li.

It provides the perfect setting for workshops, yoga, ceremonies, and other events.

With 6 by 10 meters, it can accommodate up to 20 people. It includes yoga mats, cushions, blankets, towels, candles and incense, sound bowls and a speaker.

Heaters and air-conditioning ensure you feel comfortable, both in winter and summer.



## EXTRAS

We would love to help you with your event. After 5 years of hosting retreats, we've created a beautiful network of teachers, trainers, and chefs.

Are you interested in adding a workshop to your retreat? Or are you looking for a professional chef who is already familiar with Casa Li and cooking for retreats? We're happy to put you in touch with...

- Vegan & vegetarian chefs
- Massage therapists
- Yoga teachers
- Cacao ceremony facilitators
- Tarot card readers



## Options

House	9 ppl	1 bedroom (3 ppl) 3 bedrooms (2 ppl) 3 bathrooms
Glamping tent	3/4 ppl	1 bunk beds (2 ppl) 1 double bed (1.40 m) 1 bathroom
Dorm	4 ppl	1 bunk bed (2 ppl) 2 single beds (2 ppl)
Ceremony space	6 ppl	Space for max 6 ppl
2 Tents	2 ppl	2x 1-person tents Set up by yourself
Extra house (5-min walk)	2-4 ppl	2 double beds (1.60 m) 1 bathroom

## OPTIONS & PRICES

Just so you know, while we can accommodate additional guests, Casa Li is specifically designed for a maximum of 20 people. This limitation is in place to ensure the quality of all available spaces.

The venue price is applicable for up to 20 people. Should you choose to stay with fewer than 20 guests, the cost remains unchanged as you rent the entire venue. The price includes cleaning expenses.

## Prices

Low season:    High season:  
Nov–March    April–Oct

Total Casa Li	20 ppl	905 €/night	1105 €/night
Extra house	2-4 ppl	105 €/night	165 €/night

\*Prices include use of the hot tub, ceremony space (20 ppl), yoga deck & fully equipped kitchens

## BOOKING CONDITIONS

- 20% deposit to secure booking, allows the use of our media gallery below; Cancellation policy is strictly non-refundable.
- 20% paid 7 months before the event, final payment (60% of the contracted) 4 weeks before arrival.
- Check-in is after 3 pm and room check-out is at noon.



## GENERAL CONDITIONS

- Towel and sheet replacements are not provided for retreats lasting less than a week. If you require room service midweek, additional charges apply.
- Please note that we do not accept credit cards or have ATM facilities, so kindly have cash on hand for taxi payments and any additional expenses.
- Participants are encouraged to bring their own organic shampoos and conditioners. Our venue is smoke and alcohol-free, and we strongly discourage their use.

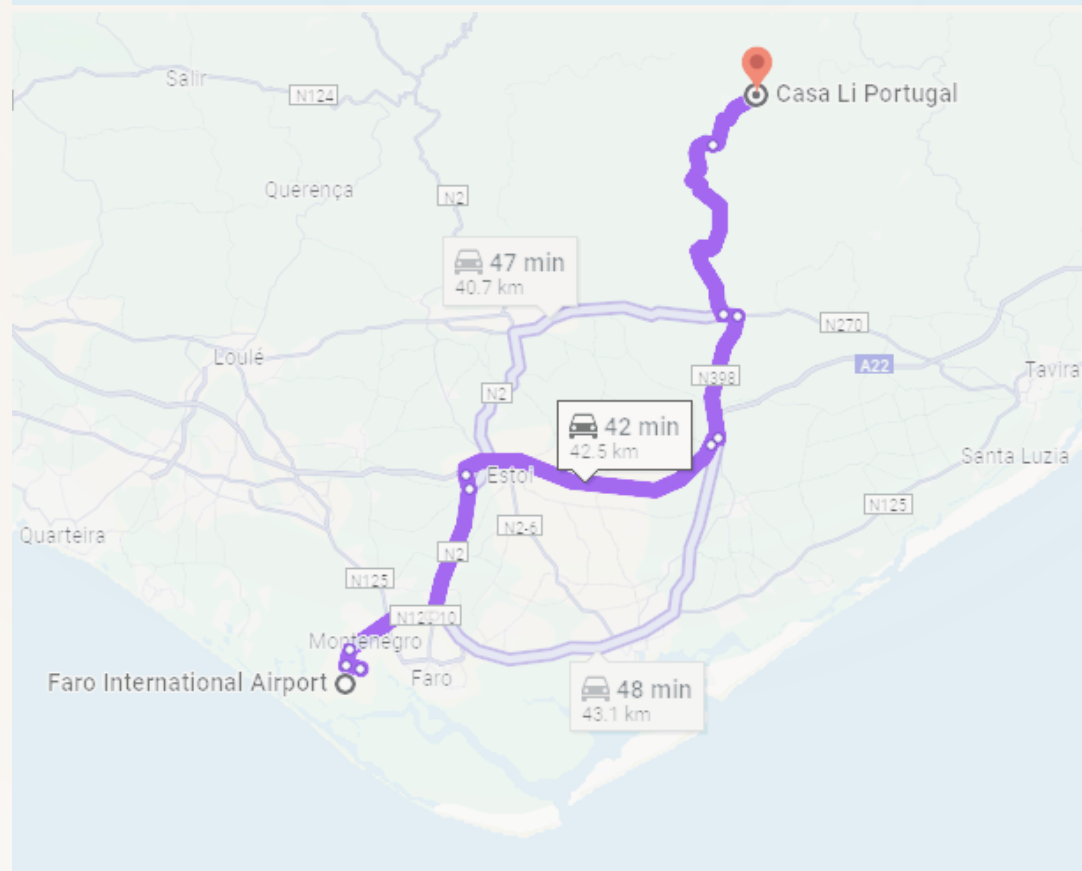
# HOW TO GET TO CASA LI

Casa Li is close to the Algarvian village Santa Catarina da Fonte do Bispo, which can be conveniently reached on easily accessible and well-maintained roads from Faro airport in just 42 minutes.

Parking spots are available at Casa Li and guests can park on the main road, 2 min from Casa Li.

You can get an airport transfer or hire a car;

- From Faro, it takes 42 min
- From Lisbon, it takes 3h



# STAY WITH US

Would you like to host a retreat or workshop at Casa Li?

Feel free to contact us via email or WhatsApp.



+351 964 896 694



Alcaria Fria 53 J  
8800-166 Sta. Catarina  
Algarve, Portugal



[info@casaliportugal.com](mailto:info@casaliportugal.com)



[www.casaliportugal.com](http://www.casaliportugal.com)

We look forward to hearing from you and helping you create a truly unforgettable event at Casa Li!